

voué

NEWEST GENERAT | ONMI CRONEEDLING RF



Application

One device. All skin types. All skin resurfacing

Face

Fine lines



Deep Wrinkles



Acne scars



Tightening



Skin reconstruction



Appearance of large pores



Body

Stretch Marks



Scars from injury or surgery



Fine lines



Working Mechanism



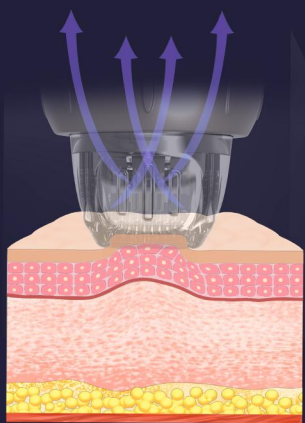
Collagen induction therapy is one of the safest skin resurfacing treatment available. Also known as skin needling. It involves the use of a single use needle gently penetrating into the skin needling stimulates the release of growth factors that build up natural collagen and elastin in the area that's being treated.

This is an excellent method of collagen insuction as the epidermis and melanocytes in the deep layer of the skin are not damaged so there is no possibility of pose inflammatory hyper pigmentation. Unlike lasers or dermabrasion, RF powered microneedling can be use on most skin types and colour, and even sensitive areas close to the eyes. It is a traget focused treatment and will not touch the surrounding skin with fast recovery time.

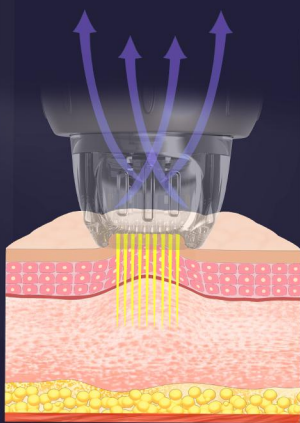
Advantage- With Vacuum

Pinxel-V update RF microneedling with vacuum, push the topical deeper with one kind dual air chamber design, air is captured through enhanced tissue engagement, microneedles create channels and RF energy is delivered, as needles retract, air is released towards the skin, driving topicals deeper into the dermis, resulting in enhanced topical penetration up to 67% with the M and F Type needles.

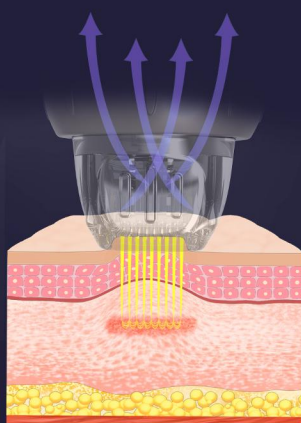
Pinxel-V takes RF microneedling to new levels. The versatility this system provides allows you to customize treatments based on your patients' specific needs – all skin types, anywhere on the body, any time of the year.



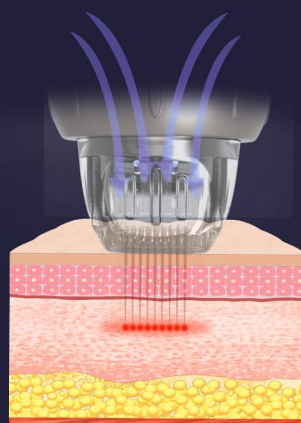
Auto Capture Skin



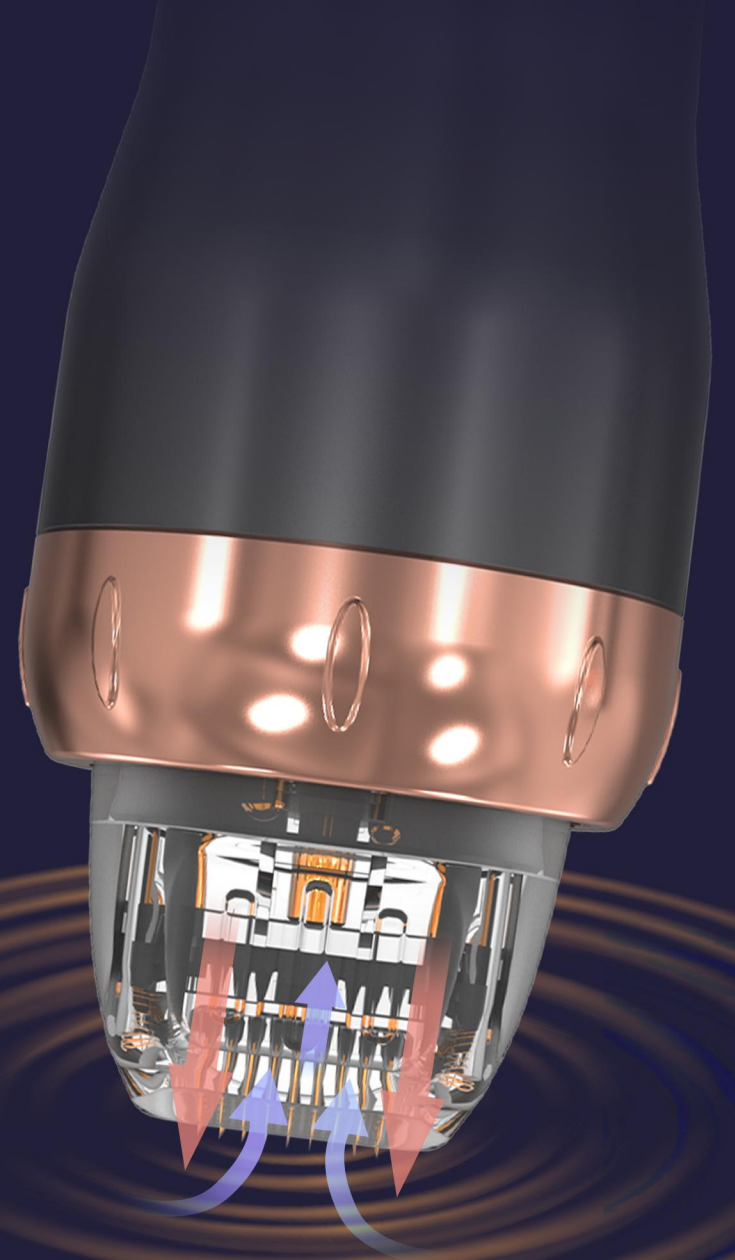
Create channels



Release vacuum & needle



Finished

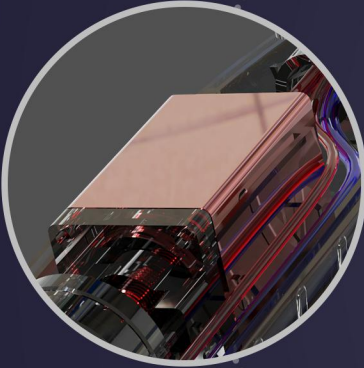


Introduction

2MHz RF Frequency



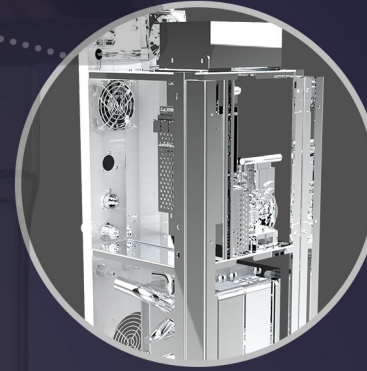
Stepping Motor Driving



Modular component



Metal Frame



Button Switch



360-degree silent wheel



Advantage- With Vacuum

- MICRO NEEDLE RF (RF) applicator for procedures requiring ablation and resurfacing of the skin. Add vacuum
- suction combined probe for better skin contact, especially around eyes and neck areas.



M-18



M-25



M-49



M-81



M-18 Stepping Motor Type

- Stepping Motor Type, different to existing solenoid type, the needle inserts to the skin smoothly with no shock, and causes no bleeding and no pain after the procedure

M-49 Gold Plating

- Needle is durable and also have high Biocompatibility by applying Gold Plating. Patient with Metal allergy could also use it with not concerning Contact Dermatitis.

M-25 Needle Depth Control

- 5-4.0mm [0.2mm Step]
- Operate epidermis layer and dermis layer by controlling the needle depth in unit of 0.2mm.

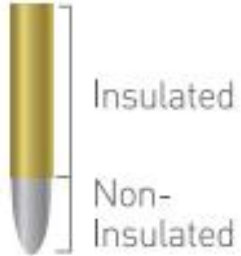
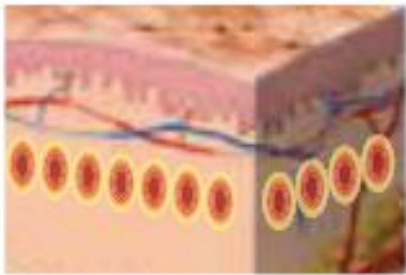
M-81 Safty Needle System/Needle Thickness: 0.2mm

- Sterilized disposable needle tip
- operator can easily notice the applying RF energy from LED light.
- The needle structure is easy to penetrate the skin with minimum resistance.

Provide Insulated & Non Insulated

RF Target Area

- Dermis



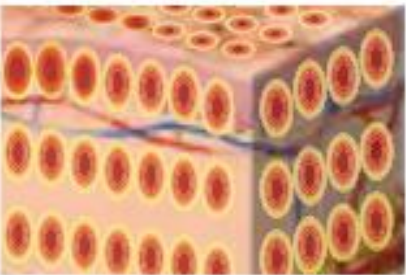
Insulated

- Less painful
- Treat Dermis only
- Less redness, easy to recovery
- Less result

■ Suitable for person who need go to work everyday

RF Target Area

- Epidermis & Dermis



Non-insulated

- Painful
- Treat Dermis and Epidermis
- More recovery time, easy scab
- Better result

■ Suitable for person who want good result



PINXEL-V-Fractional RF

-- FRACTIONAL RF applicator for non-invasive wrinkle reduction , suit for the patients fear of needle, recovery soon



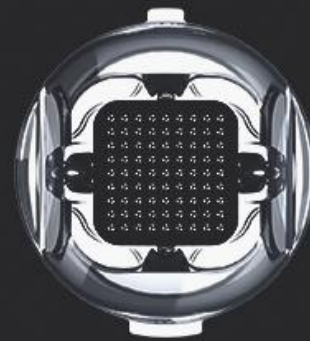
F-3*3

■ Eyes
■ Nose Area



F-5*5

■ Face Area



F-9*9

■ Body Area



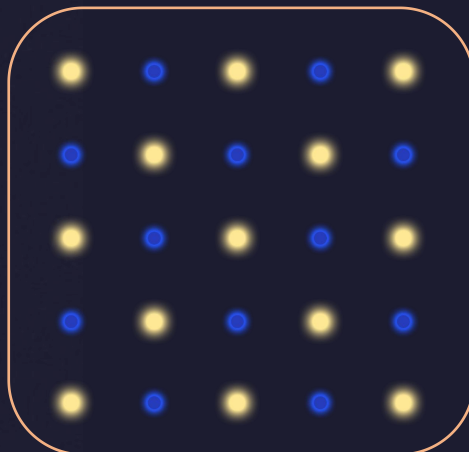
PINXEL-V-Fractional RF

-- Negtive polar (MONO/BI POLAR)

Under Bipolar

50% percent needle is positive and the other 50% is negative polar. this make the energy only works on depth of the needle. This mode is more suitable for face treatment.

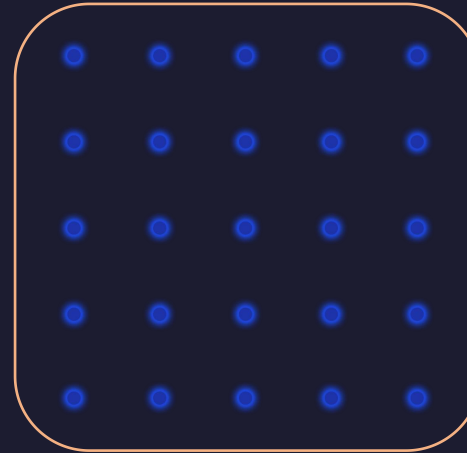
Face : Evenly



■ NEGATIVE POLE

■ POSITIVE ELECTRODE

Body: Deeper



Under the Mono mode

all the needles on the tip is positive polar. The customer need to hold the negative polar in hand during the treatment. The RF energy can go to more deeper to skin than Bipolar mode. So it's more suitable for body treatment.

Negative Handle: Together with MONO polar, energy transfer Deeper



Cooling handle: Max Reduce Pain



UI Interface

10.4 inch Full-size touch operation , Sliding menus, easy operation.



voué

Energy Calibration

Energy calibration means evaluating a relationship between the energy of the emitted particle and the channel number of the peak. Once the energy calibration is known, it is easy to find the energy of unknown source.



Product

voue

Power	max 50 watts
Handle	Fractional RF handle Micro Needle RF handle

Frequency	2MHz
-----------	------

Energy	1-10 Level
--------	------------

Pulse Duration	10-900ms
----------------	----------

Needle Depths	0.4-4mm adjustable
---------------	--------------------

Pressure Level	1-4
----------------	-----

Working mode	SINGLE/AUTO
--------------	-------------

Mode	MONO & BIPOLAR
------	----------------

Cooling	1-3 Level
---------	-----------

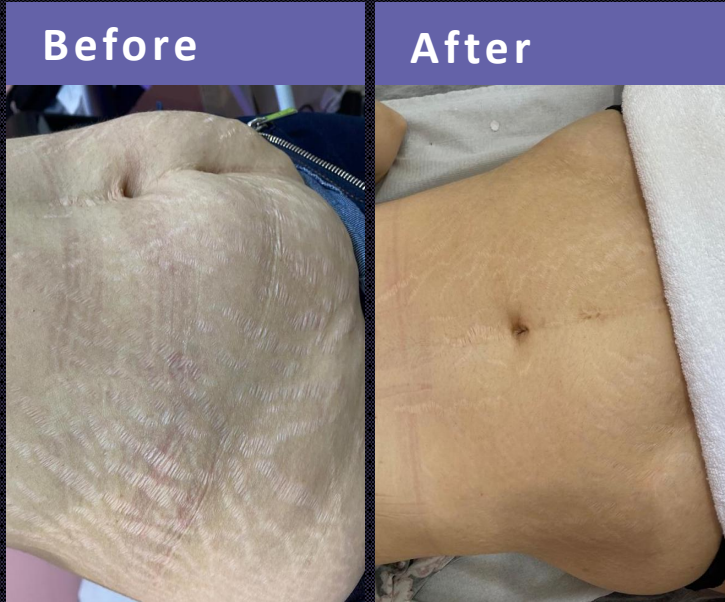
Tips	Insulated & Non-insulated
------	---------------------------

Invasive Tips	M-18, M-25, M-49, M-81
---------------	------------------------

Non invasive Tips	F-3*3 , F-5*5, F-9*9
-------------------	----------------------

Before & After

10.4 inch Full-size touch operation , Sliding menus, easy operation.



25 tips non insulated

Level 4
1.0 mm tip
140 ms
2 pass
3 weeks delay
3 treatment times



25 tips non insulated

Level 4
1.0 mm tip
140 ms
2 pass
3 weeks delay
3 treatment times

25 tips non insulated

Level 4
1.0 mm tip
140 ms
2 pass
3 weeks delay
3 treatment times



THANKS
